

## Tally Interface configuration software

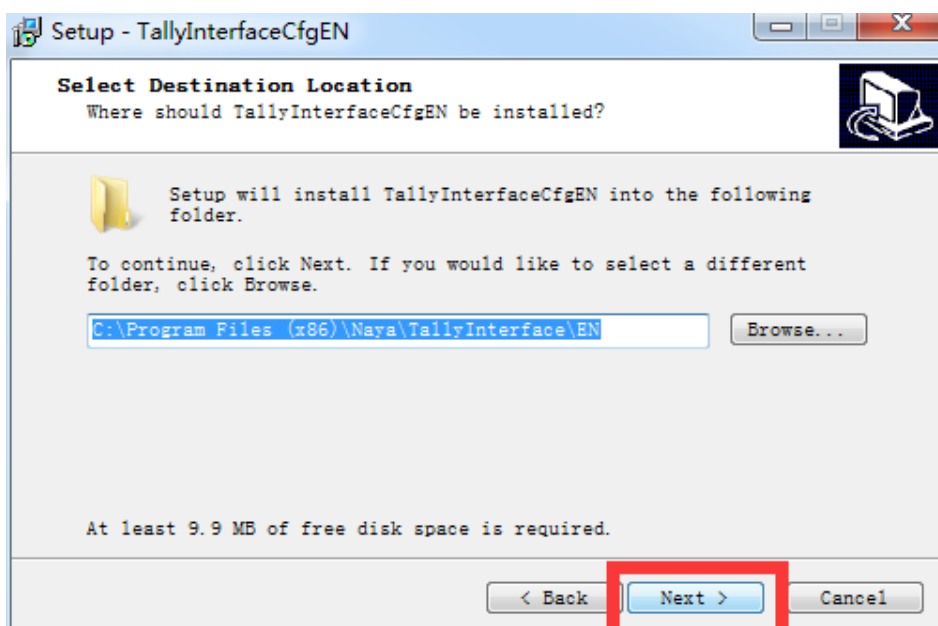
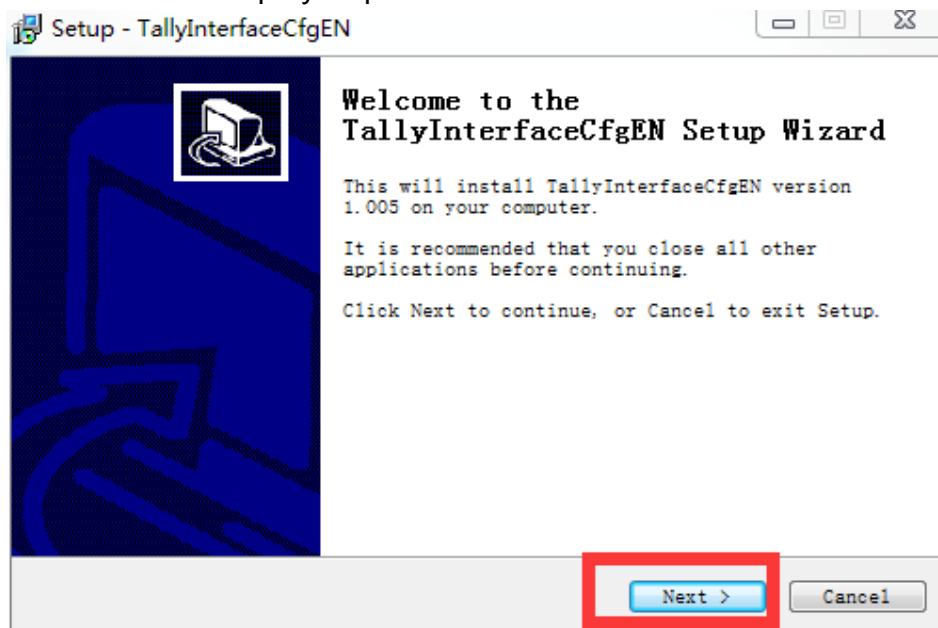
1. Download [TallyInterfaceUserSettingManual](#)

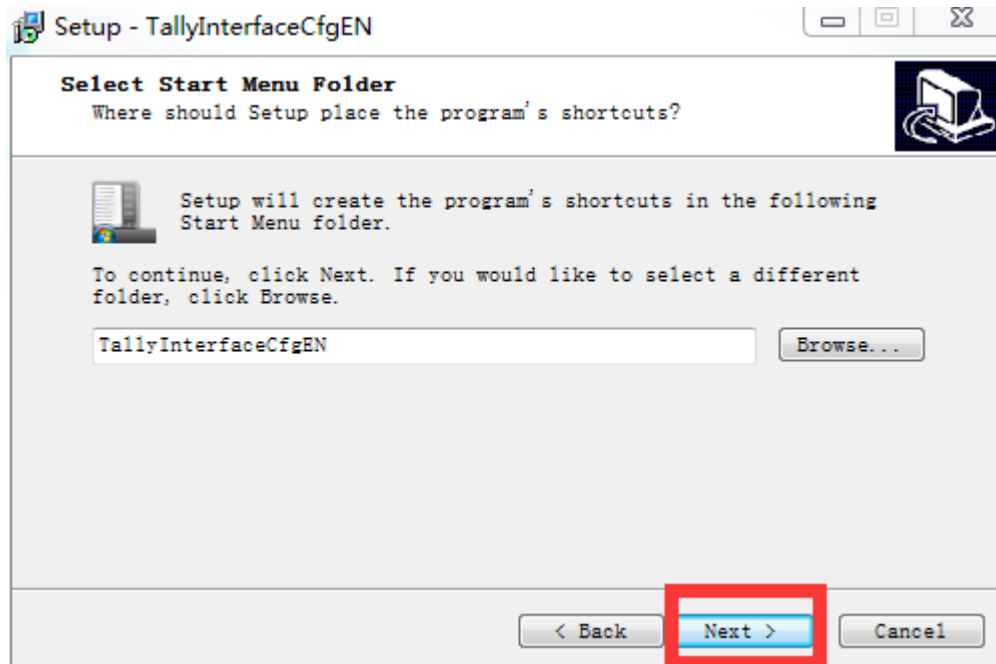
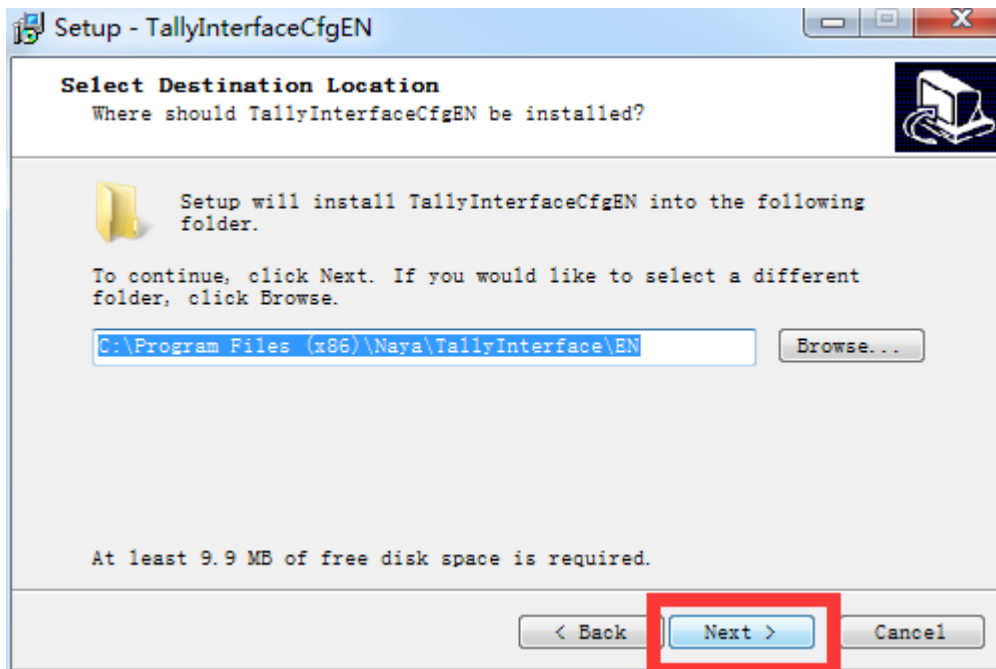
(<http://www.nayatec.com/download/TallyInterface/Tools/TallyInterfaceCfgEN-Setup.exe>)

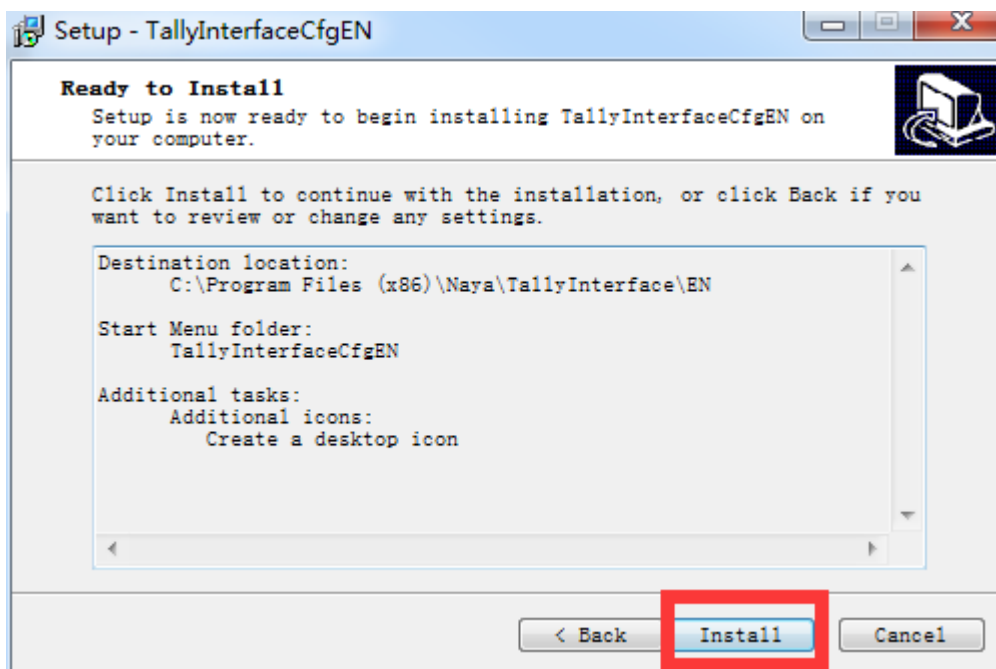
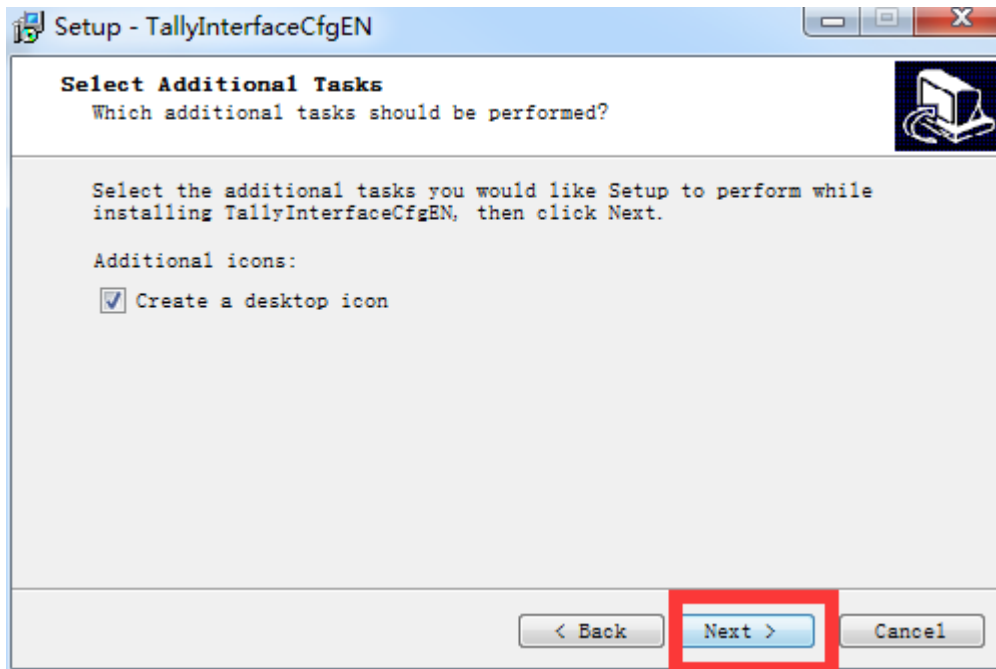


vMixTallyNaya-Setup

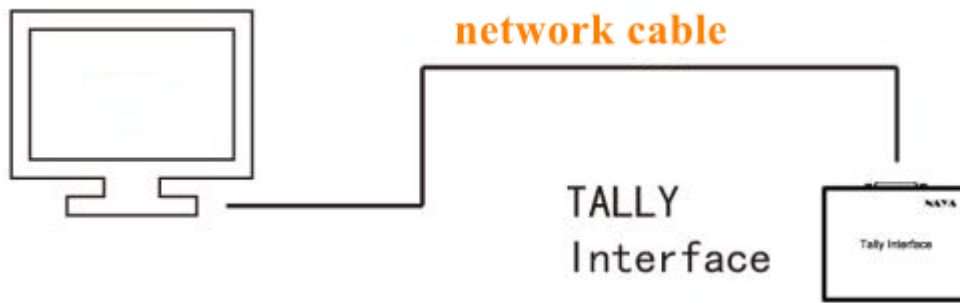
2. Install the software step by step as below:



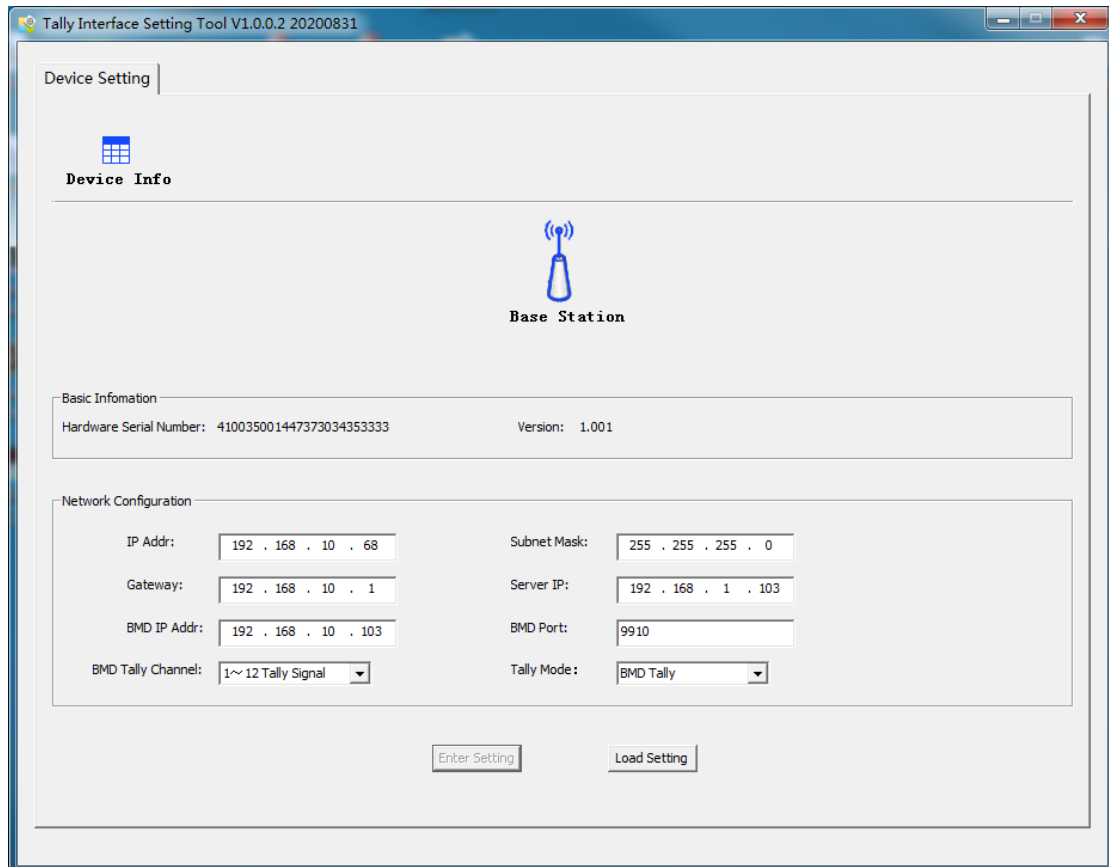




3. Connect the computer with installed Tally interface software to Tally interface with network cable as below:



4. Run Tally interface configuration software, after successful connection you will see parameter of Tally interface as below(if no parameter, that is to say, failed to connect the software):



5. Then you can make configuration:

- ① Network configuration
- ② Expansion(support up to 48-way Tally)
- ③ TALLY mode, its needed not be changed.

Expansion as below:

